

## Volkswagen Group deliveries remain stable in 2025

"The Volkswagen Group was on a solid track in 2025 – despite a challenging market environment. With around nine million vehicles delivered, our sales remain stable thanks to our attractive products across all brands and drive types. We have made good progress in comprehensively renewing our product range. Our new vehicles are receiving an excellent response and have won numerous awards. With more than 20 new models, we will continue our product offensive at full speed in 2026. These include further innovative vehicles from our model offensive in China and our Electric Urban Car Family. Entry-level e-mobility with top technology from Volkswagen, CUPRA, and Škoda – the next step on our path to becoming the global automotive tech driver."

**Oliver Blume, CEO Volkswagen Group**



"Our attractive products were the basis for a solid delivery performance in 2025 – even under very challenging conditions. In particular, the intense competitive situation in China, as well as tariffs and the discontinuation of electric vehicle subsidies in the US have impacted our business. On the other hand, we have further expanded our strong position in Europe despite new competitors. The same applies to South America, where we also gained market share. We are very pleased with our dynamic growth in all-electric vehicles. Their global deliveries rose by more than 30 percent, and in Europe even by more than 60 percent. With our new models across all drive types, we are meeting customer tastes and are well positioned for 2026."

**Marco Schubert, Member of the Group's Extended Executive Committee for Sales**

---

## Key figures

---

**8.98 million vehicles delivered worldwide, down 0.5 percent from the previous year (9.03 million vehicles)**

Significant growth in Europe (+4 percent) and South America (+12 percent) contrasts with expected declines due to challenging market conditions in North America (-10 percent) and China (-8 percent).

**Spotlight Europe:** Market share expanded to a new high of around 25 percent<sup>1</sup> despite new competitors; VW T-Roc and VW Tiguan each ranked first in the two most important growth segments

**Spotlight South America:** Deliveries increased to highest level since 2014 despite strong competitive pressure; successful new models such as the VW Tera, which attracted more than 56,000 customers in its first year, make an important contribution

**Spotlight China:** Audi regains top spot in the premium segment after six years, Volkswagen (including Jetta) expands combustion engine market leadership

**983,100 vehicles worldwide BEV deliveries up 32 percent over the previous year (744,600 vehicles)**

Global BEV share of deliveries rose significantly year-on-year from 8 to 11 percent; strong growth in Europe (+66 percent) resulted in a further expansion of the BEV market leadership there (market share around 27 percent<sup>1</sup>), five Group vehicles among the top 10 BEV models in Europe; significant growth also in the USA (+46 percent); decline in China as planned (-44 percent) in preparation for the launch of new locally developed electric models

**BEV order intake in Europe<sup>1</sup> up around 55 percent on the previous year**

Drivers include new models such as the Škoda Elroq, Audi A6 e-tron, and Volkswagen "The New Transporter"; BEV order book in Europe rises by 21 percent to more than 200,000 vehicles, BEV share of total order book is around 22 percent; order intake across all drive types rises by around 13 percent

428,000 vehicles worldwide  
PHEV deliveries up around 58  
year-over-year

Vehicles with modern second-generation plug-in hybrid drives (PHEVs) and pure electric ranges of up to 143 km<sup>2</sup> are enjoying increasing demand and are growing particularly strongly in Europe (+72 percent)

---

## Development of core regions

---

### Europe

Deliveries in the region rose by 4.5 percent to 3.94 million vehicles. Growth in **Western Europe** was 3.8 percent, while in **Central and Eastern Europe** it was even higher at 9.0 percent. In the home market of **Germany**, 5.6 percent more vehicles were handed over to customers.

### North America

The Volkswagen Group delivered 946,800 vehicles, 10.4 percent fewer than in the previous year. The main reason for this was the development in the main market, **the USA**. In a challenging environment characterized by the tariff situation, the decline there was 13.6 percent.

### South America

With an increase of 11.6 percent, South America is the fastest-growing region with a total of 663,000 vehicles delivered. In the core market of **Brazil**, growth amounted to 5.7 percent.

### Asia-Pacific

Deliveries in the region declined by 6.5 percent to 3.01 million vehicles. This was mainly due to the continuing intense competitive situation in **China**, which led to an 8.0 percent decline in deliveries in that market.

## Best-selling all-electric vehicles (BEV)

---

Volkswagen ID.4/ID.5 163,400

Volkswagen ID.3 117,700

Škoda Elroq 95,300

Audi Q4 e-tron (including Sportback) 84,900

Audi Q6 e-tron (including Sportback) 84,400

Škoda Enyaq (including Coupé) 79,600

Volkswagen ID.7 (including Tourer) 79,500

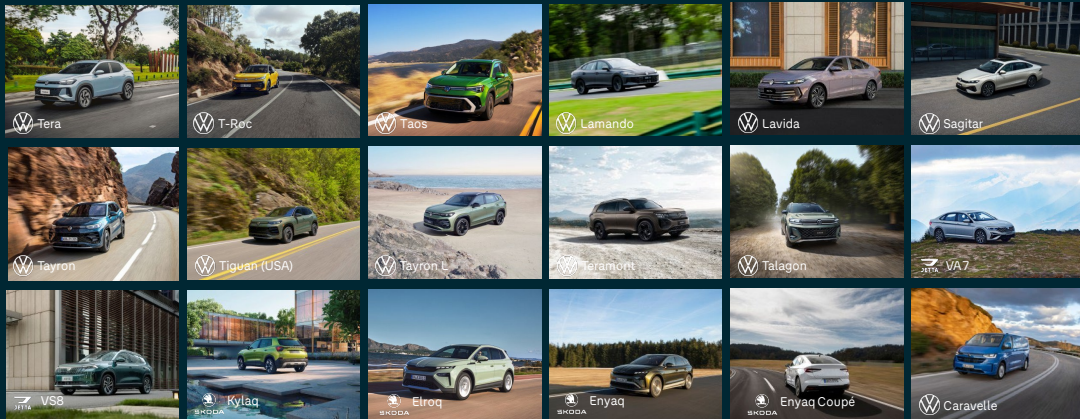
Volkswagen ID. Buzz (including Cargo) 60,700

Porsche Macan 45,400

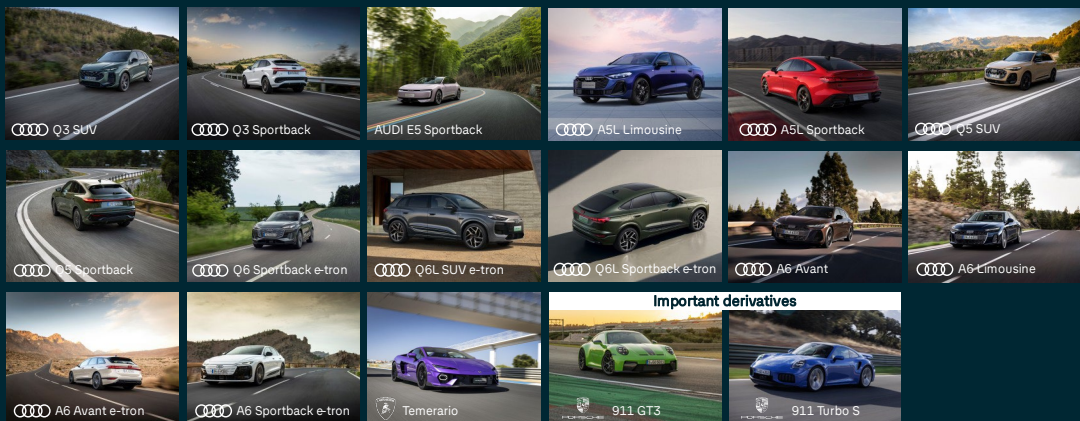
CUPRA Born 43,700

## Selected passenger car model launches Volkswagen Group 2025

## Brand Group Core

VOLKSWAGEN  
GROUP

## Brand Group Progressive / Brand Group Sport Luxury

VOLKSWAGEN  
GROUP

<sup>1)</sup> EU27 + Norway + Iceland + United Kingdom + Switzerland

<sup>2)</sup> **Volkswagen Golf 1.5 eHybrid:** Energy consumption weighted combined 15.6-14.6 kWh/100 km plus 0.3 l/100 km; fuel consumption with discharged battery combined: 5.3-5.0 l/100 km; CO<sub>2</sub> emissions weighted combined 7-6 g/km; CO<sub>2</sub> class weighted combined: B; CO<sub>2</sub> class with discharged battery: D-C

<sup>2)</sup> **Audi A3 Sportback TFSI E:** Energy consumption weighted combined 16.6-14.6 kWh/100 km plus 0.4-0.3 l/100 km; fuel consumption with discharged battery combined: 5.4-4.9 l/100 km; CO<sub>2</sub> emissions weighted combined 8-6 g/km; CO<sub>2</sub> class weighted combined: B; CO<sub>2</sub> class with discharged battery: D-C

**Volkswagen Tera:** This model is not available for sale in Europe

**Volkswagen T-Roc 1.5 eTSI:** Energy consumption combined 6.0-5.6 l/100 km; CO<sub>2</sub> emissions combined 136-128 g/km; CO<sub>2</sub> class: E-D

**Volkswagen Taos:** This model is not available for sale in Europe

**Volkswagen Lamando:** This model is not available for sale in Europe

**Volkswagen Lavida:** This model is not available for sale in Europe

**Volkswagen Sagitar:** This model is not available for sale in Europe

**Volkswagen Tayron 2.0 TSI:** Energy consumption combined 8.5 l/100km; CO<sub>2</sub> emissions combined 193 g/km; CO<sub>2</sub> class: G

**Volkswagen Tiguan (USA):** This model is not available for sale in Europe

**Volkswagen Tayron L:** This model is not available for sale in Europe

**Volkswagen Teramont:** This model is not available for sale in Europe

**Volkswagen Talagon:** This model is not available for sale in Europe

**Jetta VA7:** This model is not available for sale in Europe

**Jetta VS8:** This model is not available for sale in Europe

**Škoda Kylaq:** This model is not available for sale in Europe

**Škoda Enyaq:** Energy consumption combined 16.9-14.9 kWh/100km; CO<sub>2</sub> emissions combined 0 g/km; CO<sub>2</sub> class A

**Škoda Enyaq Coupé:** Energy consumption combined 16.3-15.0 kWh/100km; CO<sub>2</sub> emissions combined 0 g/km; CO<sub>2</sub> class A

**Volkswagen e-Caravelle Style:** Energy consumption combined 24.7 kWh/100km; CO<sub>2</sub> emissions combined 0 g/km; CO<sub>2</sub> class A

**Audi Q3 Sportback e-hybrid:** Energy consumption weighted combined 15.1-14.0 kWh/100 km plus 2.2-1.7 l/100 km; fuel consumption with discharged battery combined: 6.7-6.0 l/100 km; CO<sub>2</sub> emissions weighted combined 50-40 g/km; CO<sub>2</sub> class weighted combined: B; CO<sub>2</sub> class with discharged battery: E

**AUDI E5 Sportback:** This model is not available for sale in Europe

**Audi A5L Sedan:** This model is not available for sale in Europe

**Audi A5L Sportback:** This model is not available for sale in Europe

**Audi Q6L SUV e-tron:** This model is not available for sale in Europe

**Audi Q6L Sportback e-tron:** This model is not available for sale in Europe

**Lamborghini Temerario:** Energy consumption weighted combined 4.3 kWh/100 km plus 11.2 l/100 km; fuel consumption with discharged battery combined: 14 l/100 km; CO<sub>2</sub> emissions weighted combined 272 g/km; CO<sub>2</sub> class weighted combined: G; CO<sub>2</sub> class with discharged battery: G

**Porsche 911 GT3:** Energy consumption combined 13.8–13.7 l/100 km; CO<sub>2</sub> emissions combined 312–310 g/km; CO<sub>2</sub> class: G

**Porsche 911 Turbo S:** Energy consumption combined 11.8–11.6 l/100 km; CO<sub>2</sub> emissions combined 266–262 g/km; CO<sub>2</sub> class: G



## Deliveries Volkswagen Group – All drive types

Deliveries to customers by market	Oct. – Dec. 2025	Oct. – Dec. 2024	Delta (%)	Jan. – Dec. 2025	Jan. – Dec. 2024	Delta (%)
Western Europe	879,800	833,200	+5.6	3,381,100	3,257,800	+3.8
Central and Eastern Europe	151,800	143,300	+5.9	557,900	512,000	+9.0
North America	238,000	288,000	-17.4	946,800	1,057,000	-10.4
South America	181,300	175,200	+3.5	663,000	594,300	+11.6
China	719,800	871,500	-17.4	2,693,800	2,928,100	-8.0
Rest of Asia-Pacific	86,500	80,400	+7.5	320,400	295,200	+8.5
Middle East/Africa	122,700	110,600	+10.9	420,800	382,400	+10.1
<b>World</b>	<b>2,379,800</b>	<b>2,502,300</b>	<b>-4.9</b>	<b>8,983,900</b>	<b>9,026,700</b>	<b>-0.5</b>

Deliveries to customers by brand	Oct. – Dec. 2025	Oct. – Dec. 2024	Delta (%)	Jan. – Dec. 2025	Jan. – Dec. 2024	Delta (%)
<b>Brand Group Core</b>	<b>1,778,600</b>	<b>1,887,600</b>	<b>-5.8</b>	<b>6,754,500</b>	<b>6,689,200</b>	<b>+1.0</b>
Volkswagen Passenger Cars	1,238,100	1,399,400	-11.5	4,730,600	4,796,200	-1.4
Škoda	278,200	255,300	+9.0	1,043,900	926,600	+12.7
SEAT/CUPRA	146,800	136,100	+7.9	586,300	558,200	+5.0
Volkswagen Commercial Vehicles	115,500	96,800	+19.3	393,700	408,300	-3.6
<b>Brand Group Progressive</b>	<b>453,300</b>	<b>441,200</b>	<b>+2.7</b>	<b>1,644,400</b>	<b>1,692,500</b>	<b>-2.8</b>
Audi	447,800	435,600	+2.8	1,623,600	1,671,200	-2.9
Bentley	2,900	3,300	-11.3	10,100	10,600	-4.8
Lamborghini	2,600	2,300	+14.5	10,700	10,700	+0.6
<b>Brand Group Sport Luxury</b>	<b>66,900</b>	<b>84,700</b>	<b>-21.0</b>	<b>279,400</b>	<b>310,700</b>	<b>-10.1</b>
Porsche	66,900	84,700	-21.0	279,400	310,700	-10.1
<b>Brand Group Trucks / TRATON</b>	<b>81,000</b>	<b>88,800</b>	<b>-8.8</b>	<b>305,600</b>	<b>334,200</b>	<b>-8.6</b>
MAN	30,000	26,800	+11.9	101,600	95,700	+6.2
Volkswagen Truck & Bus	9,500	10,100	-6.0	46,100	45,800	+0.6
Scania	25,700	28,100	-8.6	94,100	102,100	-7.9
International	15,800	23,800	-33.7	63,700	90,600	-29.6
<b>Volkswagen Group (total)</b>	<b>2,379,800</b>	<b>2,502,300</b>	<b>-4.9</b>	<b>8,983,900</b>	<b>9,026,700</b>	<b>-0.5</b>

Percentage changes are based on unrounded figures



## Volkswagen Group deliveries – all-electric vehicles (BEV)

Deliveries to customers by market	Oct. – Dec. 2025	Oct. – Dec. 2024	Delta (%)	Jan. – Dec. 2025	Jan. – Dec. 2024	Delta (%)
Europe	220,300	154,400	+42.7	742,800	447,600	+65.9
USA	3,200	12,300	-73.6	72,000	49,400	+45.7
China	30,300	59,300	-48.8	115,500	207,400	-44.3
Rest of the world	11,700	12,100	-2.9	52,900	40,100	+31.7
<b>World</b>	<b>265,600</b>	<b>238,000</b>	<b>+11.6</b>	<b>983,100</b>	<b>744,600</b>	<b>+32.0</b>
<b>BEV share of global deliveries (%)</b>	<b>11.2</b>	<b>9.5</b>	<b>+1.6 pt.</b>	<b>10.9</b>	<b>8.2</b>	<b>+2.7 pt.</b>

Deliveries to customers by brand	Oct. – Dec. 2025	Oct. – Dec. 2024	Delta (%)	Jan. – Dec. 2025	Jan. – Dec. 2024	Delta (%)
<b>Brand Group Core</b>	<b>192,000</b>	<b>166,000</b>	<b>+15.6</b>	<b>695,200</b>	<b>539,200</b>	<b>+28.9</b>
Volkswagen Passenger Cars	94,300	111,700	-15.5	382,000	382,900	-0.2
Škoda	56,300	28,800	+95.7	174,900	79,600	+119.8
SEAT/CUPRA	22,400	16,900	+32.5	79,700	48,000	+65.9
Volkswagen Commercial vehicles	19,000	8,700	+117.9	58,600	28,800	+103.4
<b>Brand Group Progressive</b>	<b>59,600</b>	<b>48,700</b>	<b>+22.4</b>	<b>223,000</b>	<b>164,500</b>	<b>+35.6</b>
Audi	59,600	48,700	+22.4	223,000	164,500	+35.6
Bentley	-	-	-	-	-	-
Lamborghini	-	-	-	-	-	-
<b>Brand Group Sports Luxury</b>	<b>12,800</b>	<b>22,700</b>	<b>-43.5</b>	<b>61,700</b>	<b>39,100</b>	<b>+57.8</b>
Porsche	12,800	22,700	-43.5	61,700	39,100	+57.8
<b>Brand Group Trucks / TRATON</b>	<b>1,200</b>	<b>60</b>	<b>+91.7</b>	<b>3,200</b>	<b>1,700</b>	<b>+85.8</b>
MAN	880	350	+150.4	1,970	740	+167.8
Volkswagen Truck & Bus	10	20	-70.8	60	120	-49.2
Scania	220	80	+188.3	600	270	+126.3
International	50	150	-64.9	590	610	-3.3
<b>Volkswagen Group (total)</b>	<b>265,600</b>	<b>238,000</b>	<b>+11.6</b>	<b>983,100</b>	<b>744,600</b>	<b>+32.0</b>

Percentage changes are based on unrounded figures

## Contact

---

### Christoph Oemisch

Corporate Communications, Spokesperson Finance & Sales

+49 (0) 1520 9364626

[christoph.oemisch@volkswagen.de](mailto:christoph.oemisch@volkswagen.de)

[www.volkswagen-group.com](http://www.volkswagen-group.com)

---

## About the Volkswagen Group

---

The Volkswagen Group is one of the world's leading car makers, headquartered in Wolfsburg, Germany. It operates globally, with 115 production facilities in 17 European countries and 10 countries in the Americas, Asia and Africa. With around 680,000 employees worldwide. The Group's vehicles are sold in over 150 countries.

With an unrivalled portfolio of strong global brands, leading technologies at scale, innovative ideas to tap into future profit pools and an entrepreneurial leadership team, the Volkswagen Group is committed to shaping the future of mobility through investments in electric and autonomous driving vehicles, digitalization and sustainability.

In 2024, the total number of vehicles delivered to customers by the Group globally was 9.0 million (2023: 9.2 million). Group sales revenue in 2024 totaled EUR 324.7 billion (2023: EUR 322.3 billion). The operating result in 2024 amounted to EUR 19.1 billion (2023: EUR 22.5 billion).

---

## THE GLOBAL AUTOMOTIVE TECH DRIVER.

---

Volkswagen Aktiengesellschaft

Registered Seat: Wolfsburg | Registration Court: Amtsgericht Braunschweig

Commercial Register No.: 100484

Chairman of the Supervisory Board: Hans Dieter Pötsch

Board of Management: Oliver Blume (Chairman), Arno Antlitz, Ralf Brandstätter, Gernot Döllner, Manfred Döss, Thomas Schäfer, Thomas Schmall-von Westerholt, Hauke Stars

Important Notice: The above information is automatically added to this e-mail. This addition does not constitute a representation that the content of this e-mail is legally relevant and/or is intended to be legally binding upon Volkswagen Aktiengesellschaft.